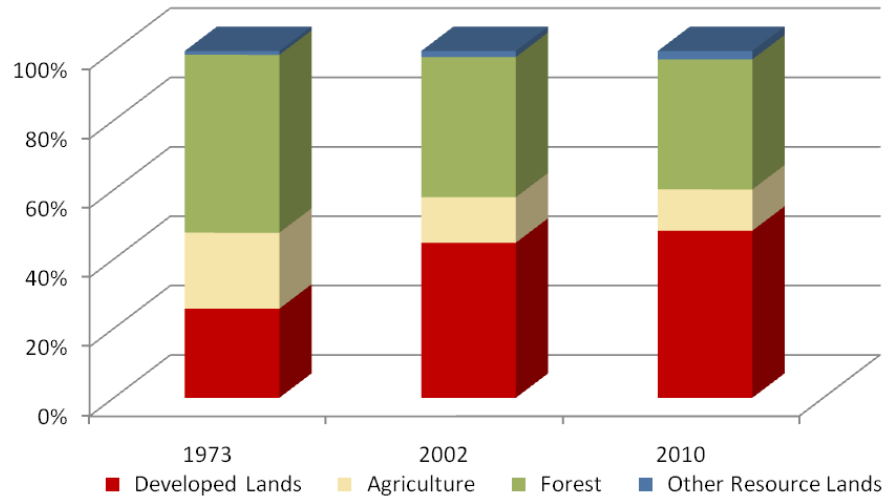


Prince George's County

	Land Use in Acres		Land Use Change	
	2002 ³ Acres	2010 ² Acres	2002-2010 Acres	Percent
Very Low Density Residential ¹	9,450	10,659	1,209	12.8%
Low Density Residential	23,558	26,389	2,830	12.0%
Medium Density Residential	49,869	53,298	3,429	6.9%
High Density Residential	12,990	13,765	774	6.0%
Commercial	8,946	9,670	724	8.1%
Industrial	7,776	8,438	662	8.5%
Other Developed Lands/ Institutional/Transportation ¹	25,705	26,784	1,079	4.2%
Total Developed Lands⁵	138,294	149,002	10,709	7.7%
Agriculture	40,531	36,829	-3,702	-9.1%
Forest	125,095	115,990	-9,104	-7.3%
Extractive/Barren/Bare	2,357	4,456	2,099	89.1%
Wetland	2,998	2,997	-1	0.0%
Total Resource Lands⁵	170,981	160,273	-10,708	-6.3%
Total Land	309,275	309,275		
Water	9,515	9,515		

	Land Use in Acres			Land Use Change
	1973 ⁴	2002 ³	2010 ^{1,2}	1973-2010 Acres
All Residential	52,533	95,867	104,110	51,578
All Non-Residential	27,284	42,426	44,892	17,609
Total Developed Lands⁵	79,816	138,294	149,002	69,186
Total Resource Lands⁵	230,833	170,981	160,273	-70,560
Total Land	310,649	309,275	309,275	
Water	8,722	9,515	9,515	

Land Use Change 1973 - 2010



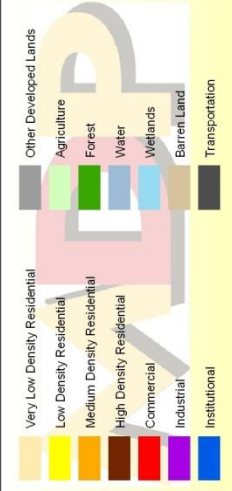
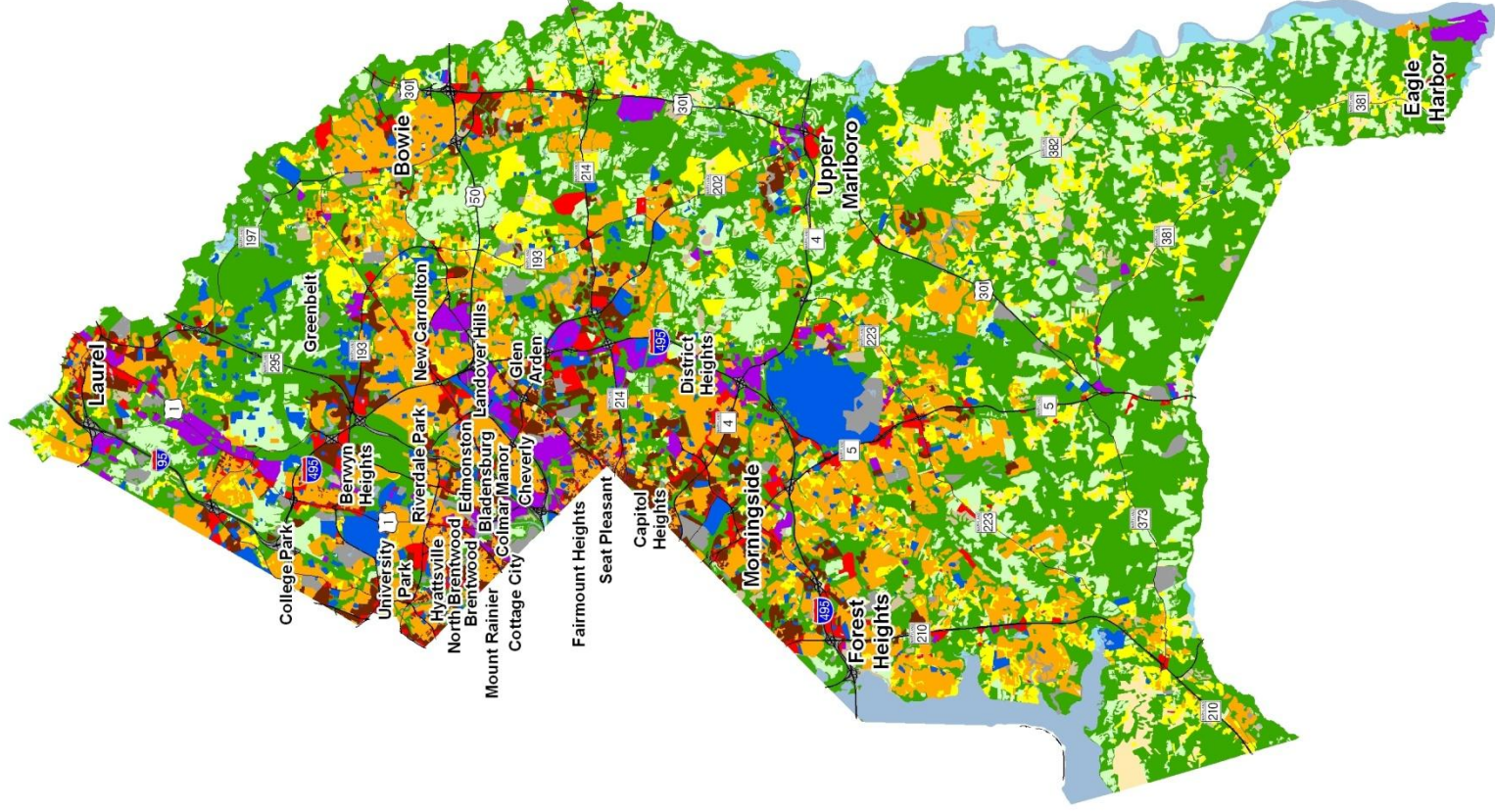
1. Two new categories have been added to the 2010 Land Use/Land Cover layer update; very low density residential development (191,192) and transportation (80).

2. Updates/modifications to the 2010 land use/land cover layers used the 2007 NAIP aerial imagery and parcel information from Maryland Property View 2008.

3. The original 2002 data were mapped using geo-rectified LANDSAT satellite imagery and 2000 MD Property View. In 2010 two new land use categories were added, transportation and very low density residential making it necessary to modify the 2002 land use/land cover layer to incorporate these categories for comparative purposes. Additionally, better imagery and property data information were used to make further modifications. The enhanced 2002 dataset is available upon request.

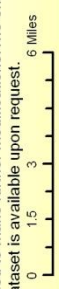
4. Very low density residential was not mapped in 1973, so there is no data associated with changes. Transportation was not mapped in 1973.

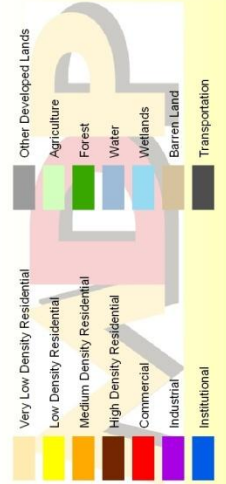
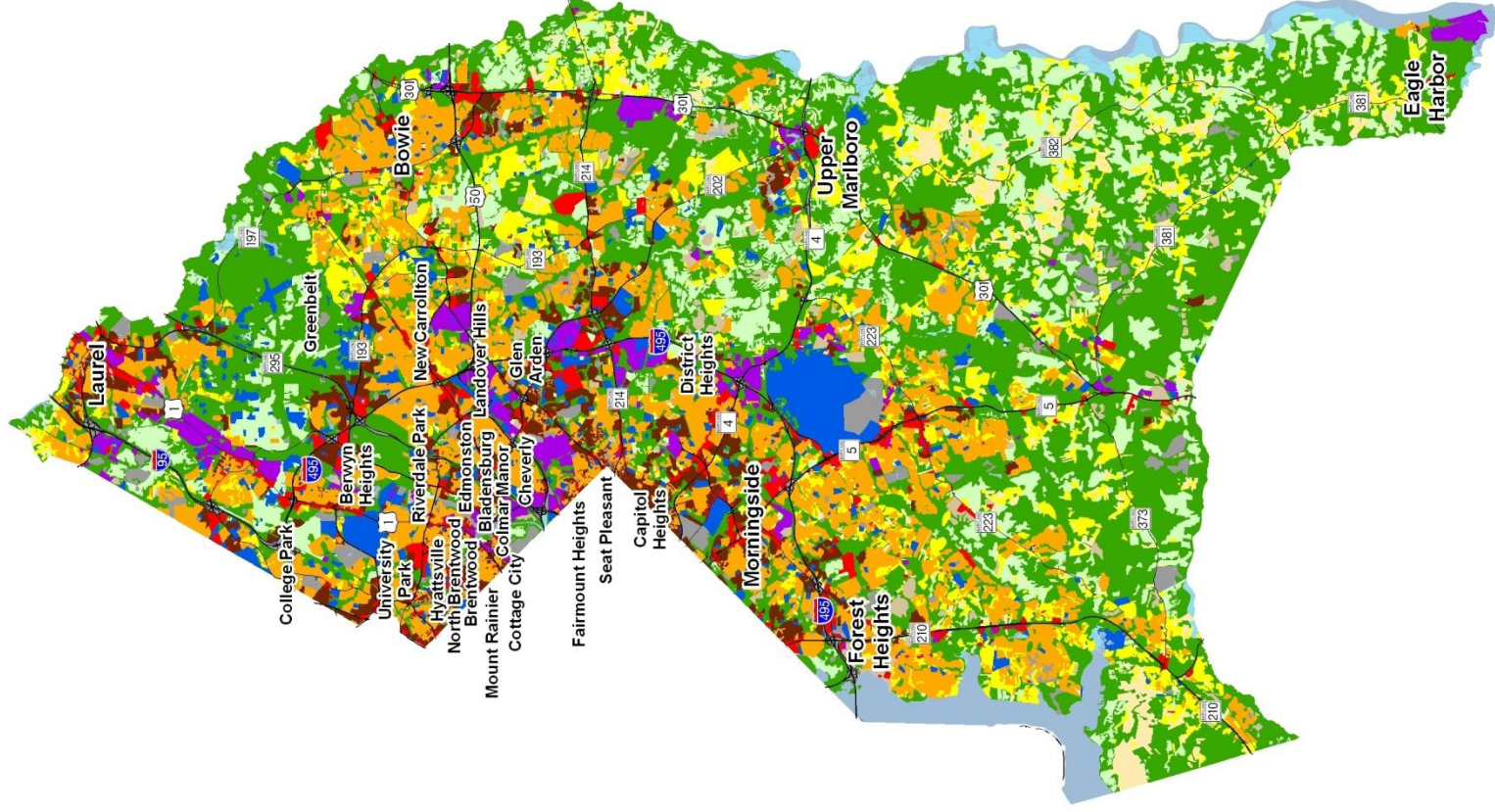
5. As noted above, new land use categories were added in 2010 and associated adjustments were made to 2002 data. Similar adjustments were not made to 1973 data, making it impossible to know how much change from 1973 is due to new development since then, versus misclassified land uses at that time. For these reasons, we suggest reliance only on change statistics for the aggregate land use categories, Total Developed and Total Resource Lands



Prince George's County 2002 Land Use/Land Cover

1) The original 2002 data were mapped using geo-rectified LANDSAT satellite imagery and 2000 MD PropertyView. In 2010 two new land use categories were added, transportation and very low density residential making it necessary to modify the 2002 land use/land cover layer to incorporate these categories for comparative purposes. Additionally, better imagery and property data information were used to make further modifications. The enhanced 2002 dataset is available upon request.

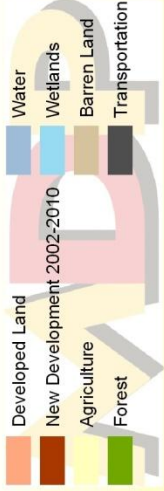
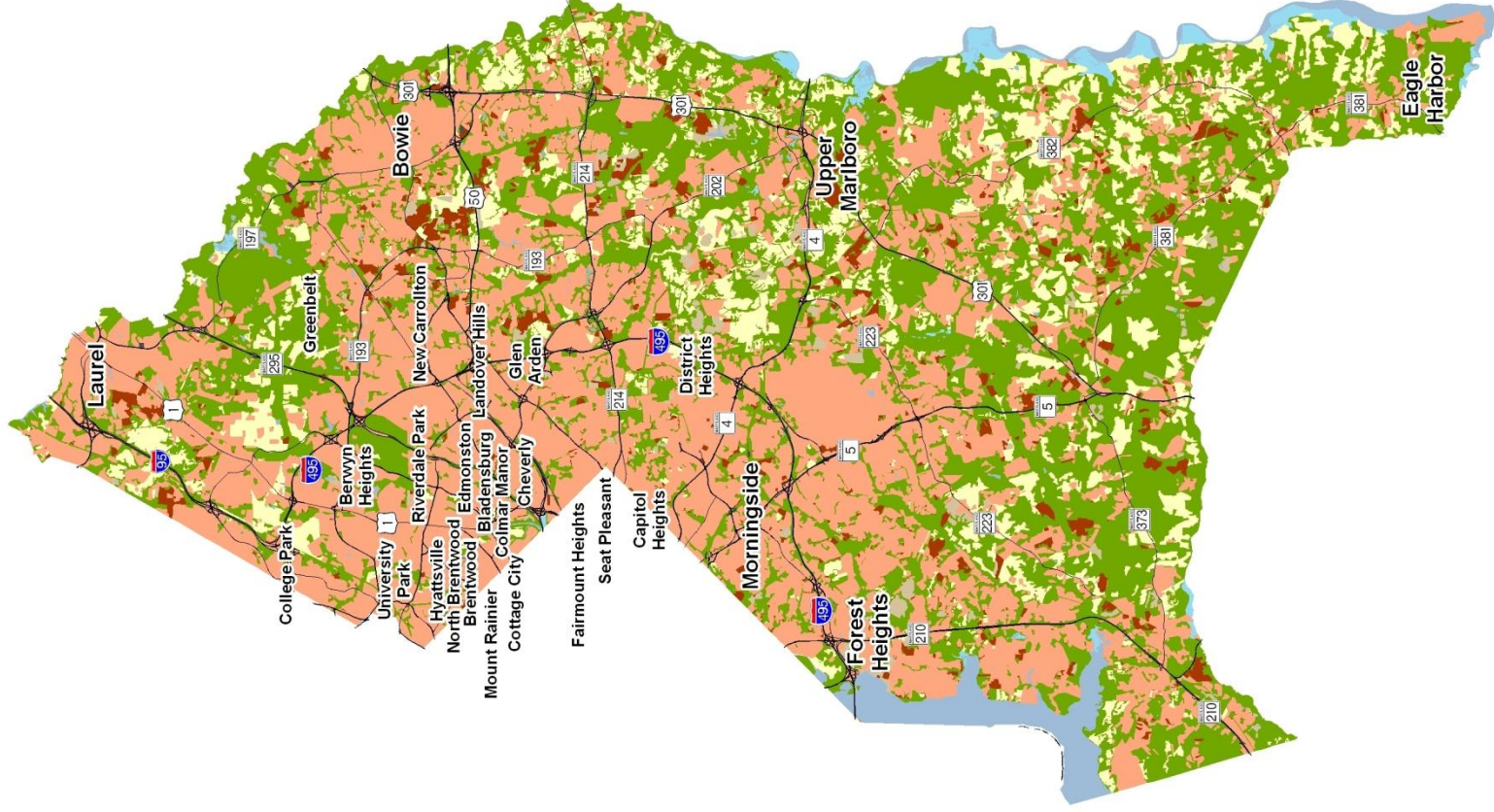




Prince George's County 2010 Land Use/Land Cover

1) Two new categories have been added to the 2010 Land Use/Land Cover layer update: very low density residential development (191, 192) and transportation (80).
 2) Updates/modifications to the 2010 land use/land cover layers used the 2007 NAIP aerial imagery and parcel information from Maryland Property View 2006.





Prince Georges County New Development, 2002-2010

1) Updates/modifications to the 2010 land use/land cover layers used the 2007 NAIP aerial imagery and parcel information from Maryland Property View, 2008.
 2) The original 2002 data were mapped using geo-rectified LANDSAT satellite imagery and 2000 MD Property View. In 2010 two new land use categories were added, transportation and very low density residential, making it necessary to modify the 2002 land use/land cover layer to incorporate these categories for comparative purposes.

